

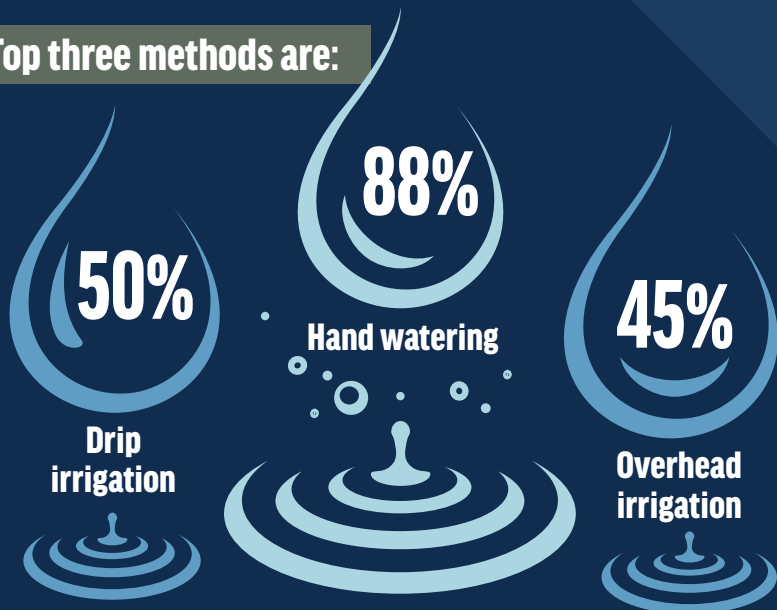
Chat ROOM

Editor's Note: Each month, we send out a survey to our readers on a variety of topics and report the results here. Chat Room is a perfect venue to get to know your peers and where you stand on different issues affecting the industry. Do you have a question you want us to ask? Contact editor, Jasmina Dolce, at jdolce@greatamericanpublish.com.

This month, we asked readers about water management, greenhouse lighting options and cannabis/hemp production. Here's what they had to say.

What type(s) of irrigation do you use in your greenhouses?

Top three methods are:



Learn more about proper water management on page 24.

What is your biggest challenge when it comes to watering plants?

YOU SAID:

- Being consistent.
- Teaching employees **how and when** to water.
- Accommodating the watering needs of many different plant types in a greenhouse.
- Catching them **before they dry out**.
- Time constraints.
- Overwatering.

What challenges have you encountered with greenhouse lighting?

YOU SAID:

- Finding affordable options.
- Light does not reach all areas the same. Some areas get more direct sunlight and get too hot.
- Understanding the types of LED wavelengths and plant reactions.
- Production plans change. Plants that require supplemental lighting may not end up in the same spot that was originally planned.
- Greenhouse structures casting unplanned shade throughout greenhouses.

Do you currently grow cannabis/hemp?

12% SAID YES!

Of those who said no, 10% are considering adding cannabis/hemp to their production and 20% are still undecided.

What is your biggest concern when it comes to cannabis/hemp production?

YOU SAID:

- Oversaturation – **where and how** to market.
- The site **security** needed.
- Learning and keeping up with **changing laws and regulations**.
- Finding **reputable** partners.
- Startup **costs**.

For information on starting a cannabis operation, turn to page 28.

#2
High-pressure sodium
22%

What type(s) of greenhouse lighting do you use in your operation?

#3
Compact fluorescent lighting
18%

TOP THREE METHODS ARE

#1 LED 42%

Turn to page 18 for information on greenhouse lighting.

And 22% said they use no lighting at all!